

Rapid 200 Series



Heavy duty transmission
Heavy duty transmission provides powerful and energy saving granulation due to the flywheel effect.

Less energy required with optimized rotor speeds

The 200 Series is offered in three different rotor speeds, 260, 400 or 840 rpm, assuring the most effective configuration related to the application. Choosing the optimal rotor speed minimizes energy consumption.



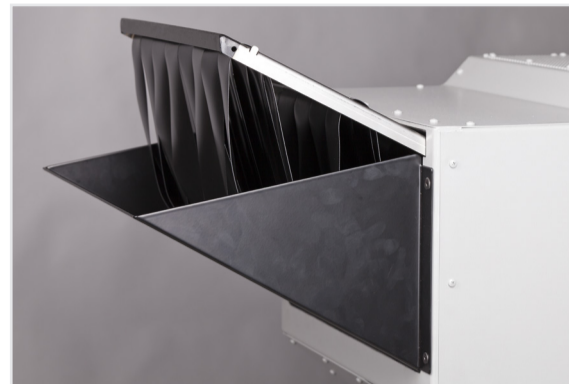
Highest-quality regrind

The Rapid cutting technique, comprised of clean scissors-cutting action and constant cutting circle, produces granules of a uniform size with minimal dust content even with the toughest materials.



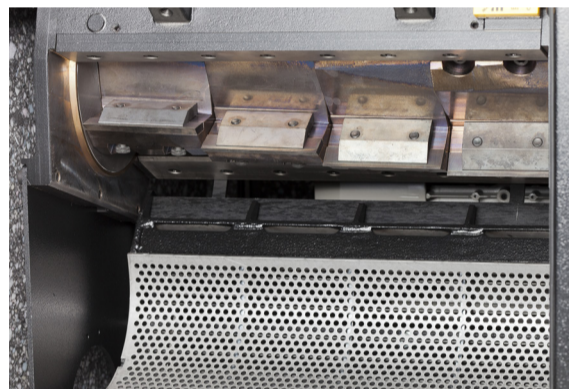
Super-Tangential cutterhouse

The Rapid 200-series comes with the super-tangential cutter house option that is tailored for lightweight bulky products such as bottles, containers and injection moulded parts. It is effectively gripping and cutting the parts to prevent them from bouncing on the rotor.



Easy removable flaps

The flaps effectively prevent flyback of material. The slide tray makes them easy to pull out for cleaning when changing material or colour.



Reversible screen

The screen can be turned, providing longer lifetime and maximum durability. Wear resistant execution (option) gives further lifetime in tough materials.



Rotor configurations

The Rapid 200 Series comes with either an open or a staggered rotor. Both perform scissors cut providing energy effective granulation. The open rotor supports presetting of knives, the staggered configuration includes cassette knives, both enabling quick and easy knife changes minimizing downtime for service and maintenance.



Belt conveyor feeding



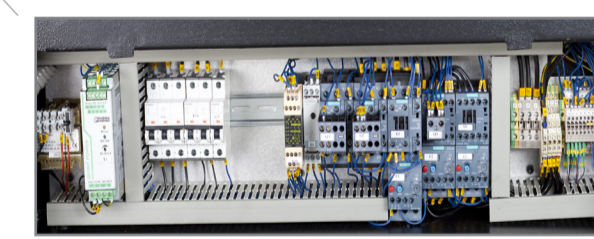
Manual feeding
No sound proofing



Manual feeding,
Tray



Feeding with
roll feed unit



Highest standard of components

We choose well known components that can be relied on in every aspect.

Specifications

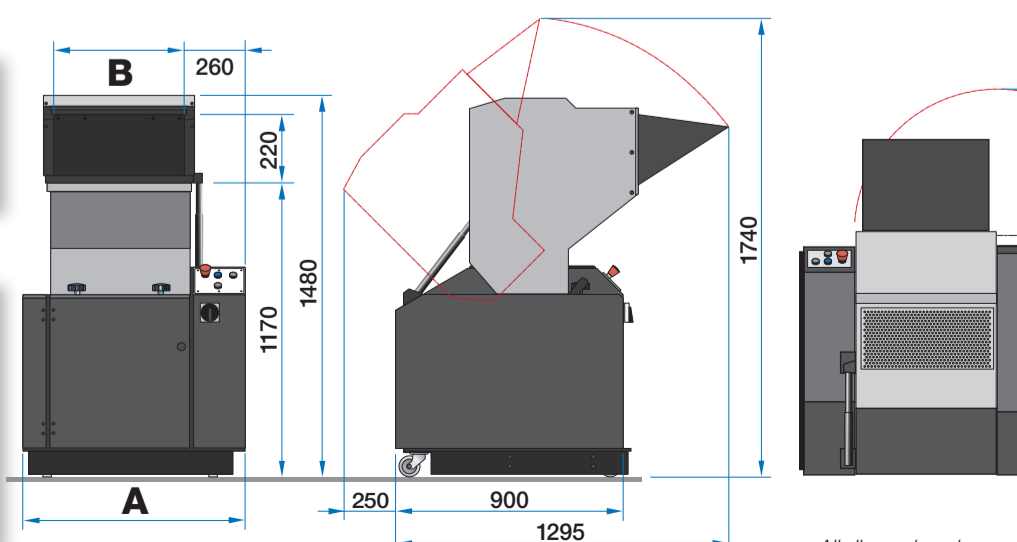
	200-24	200-36	200-48	200-60
Rotor diam. (mm)	200			
type	Staggered (std), open (opt.)			
Rotating knives				
Staggered configuration	3x2	3x3	3x4	3x5
Open configuration	3x2			
Rotor speed (standard rpm)	260	400	400	400
Hopper inlet	240x220	360x220	480x220	600x220
Cutterhouse opening, Tangent/Precut	240x230	360x230	480x230	600x230
Super-Tangential	240x270	360x270	480x270	600x270
Motor, standard, (kW)	4.0	5.5	5.5	5.5
alternatives, (kW)	4.0, 5.5, 7.5, 11			
Weight (kg)	500	550	650	750

Features

- Cutterhouse configurations: Super-Tangential, Tangential or Precut
- Cassette knives / Preadjustable knives
- Double scissors cutting action
- Heavy duty transmission

Options

- Rotor speed 260, 400 or 840 rpm
- PowerTech package, wear resistant execution
- Various hoppers for sheets, pipes/profiles, belt conveyor, roll feed
- Extra fixed knife, increasing throughput, Tangential
- Screen diam. Std/opt. (mm) 6 4 / 8 / 10 / 12
- Level indicator
- Knife setting jig (for presetting of knives in open rotor configuration)



All dimensions in mm.

Model	A	B	C	D
200-24	650	240	210	330
200-36	770	360	330	450
200-48	890	480	450	570
200-60	1100	600	570	690

Cutterhouse configurations
The Rapid 200-Series comes in 3 configurations, each with its own purpose. The Super-T (right) is for example ideal for bulky light weight goods where gripping is crucial. Staggered rotor (right) is standard. The optional "open rotor" (below) is used when straight cut is optimal.

